

# GLOBAL FOOTPRINT

# 7

Countries

## United Kingdom

ABERDEEN / BARRY / BRIDGEND / CARDIFF  
DUNDEE / EDINBURGH / GLASGOW / INVERNESS  
LIVERPOOL / LONDON / NEATH / NEWPORT  
PERTH / PONTYPRIDD / STIRLING / SWANSEA

Total Investment  
**S\$440.5 million**

Total Operating Fleet Size  
**8,583**

Total Number of Employees  
**6,096**



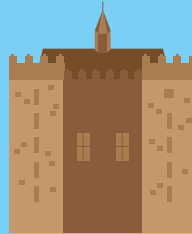
## Ireland

CORK / DUBLIN  
GALWAY / LIMERICK

Total Investment  
**S\$3.1 million**

Total Operating Fleet Size  
**25**

Total Number of Employees  
**17**



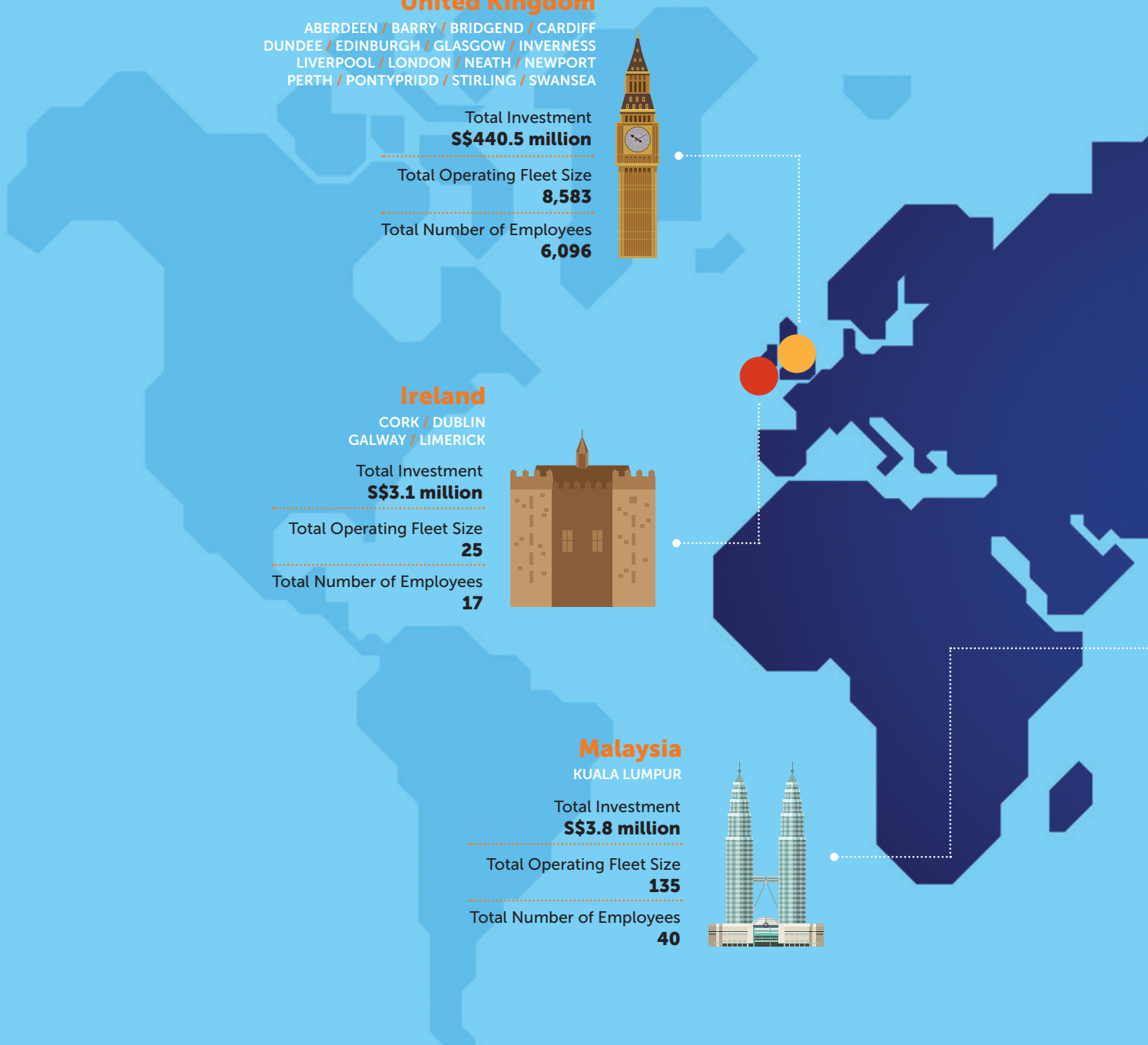
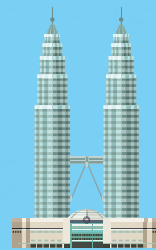
## Malaysia

KUALA LUMPUR

Total Investment  
**S\$3.8 million**

Total Operating Fleet Size  
**135**

Total Number of Employees  
**40**



**61**  
Locations

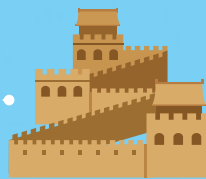
**43,284**  
Vehicles

**24,697**  
Employees



**China**

BEIJING / CHENGDU / GUANGZHOU  
JILIN CITY / NANJING / NANNING  
SHANGHAI / SHENYANG / SUZHOU



Total Investment  
**S\$265.5 million**

Total Operating Fleet Size  
**11,302**

Total Number of Employees  
**815**

**Vietnam**

HO CHI MINH CITY



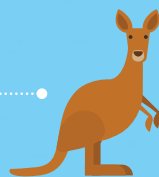
Total Investment  
**S\$11.5 million**

Total Operating Fleet Size  
**240**

Total Number of Employees  
**101**

**Australia**

ALICE SPRINGS / BALLARAT / BLUE MOUNTAINS  
BROKEN HILL / CANBERRA / COFFS HARBOUR / DARWIN  
EDGEWORTH / GEELONG / GLADSTONE / GRAFTON  
JABIRU / MELBOURNE / MILDURA / MORISSET / NARRABRI  
PARRAMATTA / PENRITH / PERTH / QUEANBEYAN / SAWTELL  
SINGLETON / SUNSHINE COAST / THORNTON / TORONTO  
SYDNEY / WEE WAA / WOOLGOOLGA / YASS



Total Investment  
**S\$1,135.9 million**

Total Operating Fleet Size  
**4,194**

Total Number of Employees  
**3,805**



**Singapore**

Total Investment  
**S\$428.2 million**

Total Operating Fleet Size  
**18,805**

Total Number of Employees  
**13,823**